

PROJECT NAME:	<b>JLS (HUIZHOU) CO.,LTD</b>
PROJECT NOTES:	Building A, Jinyu East Jewelry Industrial Park, Qiuchang Town, Huiyang District Huizhou City, Guangdong Province, China, 516221 www.jls-china.com E: sales@jls-china.com T: +86 752 3877818 ext. 8013

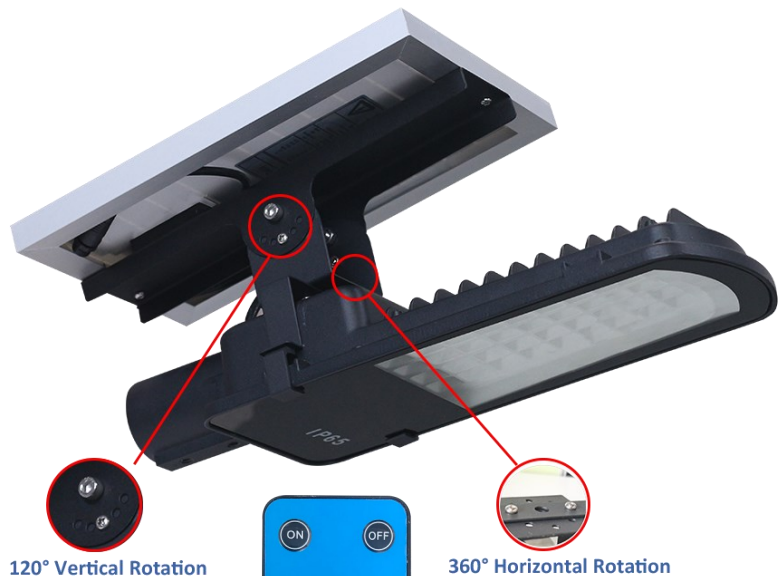
## SOLAS SERIES — Microwave Sensing Solar LED Street Light

### DESCRIPTION:

JLS China's Microwave Sensing Solar LED Street Light is ideal for night lighting of pathway, driveway, garden yard, aisle, patio, etc. During the day, the solar panel converts solar power into electricity and stores in the rechargeable battery. At night, the light turns on automatically after turn it on with the remote control for the first time before use. Duration of the lighting depends on sunlight exposure, install location, weather condition and hours of the daylight.

### FEATURES & BENEFITS:

- ◆ Off-grid solar power
- ◆ Dual axis rotation on solar panel
- ◆ Build in Microwave sensor
- ◆ IP65 Rating
- ◆ Remote Control
- ◆ Working temperature: -25°C-40°C
- ◆ 2 Years Warranty



120° Vertical Rotation

360° Horizontal Rotation

Bracket Option:



2 YEAR STANDARD WARRANTY—EXTENDED WARRANTIES AVAILABLE



# Microwave Sensing Solar LED Street Light

SPECIFICATIONS TABLE

Model	J168-SOL-6-S	J168-SOL-12-S	J168-SOL-15-S
LED Wattage	6W	12W	15W
Solar Panel Power	Poly-Si (6V/5W)	Poly-Si (12V/10W)	Poly-Si (12V/18W)
Battery Capacity	Li-ion Battery 3.7V, 5.2Ah	Li-ion Battery 7.4V, 5.2Ah	Li-ion Battery 7.4V, 7.8Ah
Illumination Angle	150° X 110°		
Charge Time	3 - 4 Hours		
Operating Day	2 days without Sun	With Occupancy Sensor	
IP Rating	IP65		
Life (L70)	50,000 Hours		
Power Source	Off Grid Solar power		
CCT (K)	3000K / 4000K / 5000K / 5700K		
Operational Temperatures	-25°C — 40°C		
Housing Finish	Black		
Housing Material	Aluminum		
Environment	Outdoor wet location / Indoor location		
Feature	Multi function control		
Warranty	2 years		

